

**Oggettistica**



# CASA delle ANFORE della TUNISIA



Via Nettunense, 26.200 - APRILIA  
 (dalla stazione di Campo di Carne 300 mt. direzione Anzio)  
 Magazzino: Via dei Giardini, 10B - APRILIA  
**Tel. 333.4855686**  
 e.mail: faical66@live.it • www.ceramichetunisine.com

# Modello Grande



Cod. 11 - 50x60 cm



Cod. 12 - 50x40 cm



Cod. 13 - h 80cm



Cod. 14 - h 80cm



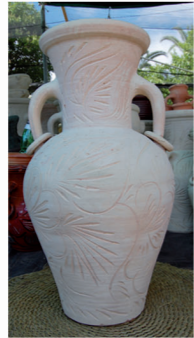
Cod. 15 - 80x40 cm



Cod. 16 - 60x30 cm



Cod. 17 - h 80 cm



Cod. 18 - h 100 cm



Cod. 19 - h 100 cm



Cod. 20 - h100 cm



Cod. 21 - h100 cm



Cod. 22 - h100 cm



Cod. 23 - h100 cm



Cod. 24 - Veliero



Cod. 25 - h100cm



Cod. 26 - h100cm



Cod. 27 - h100cm



Cod. 28 - h100cm



Cod. 29 - 80x60 cm



Cod. 30  
h120cm



Cod. 31  
h120cm



Cod. 32  
h120cm



Cod. 33  
h120cm



Cod. 34  
h120cm



Cod. 35  
h120cm



Cod. 36  
h120cm

# Lampade

# Vasi

h 30 cm



Cod. 37



Cod. 38



Cod. 39



Cod. 40



Cod. 41



Cod. 42



Cod. 43



Cod. 44



Cod. 45



Cod. 46



Cod. 47



Cod. 48



Cod. 49



Cod. 50



Cod. 51



Cod. 52



Cod. 53



Cod. 54

# Mattonelle



Cod. 55 - 40x30 cm



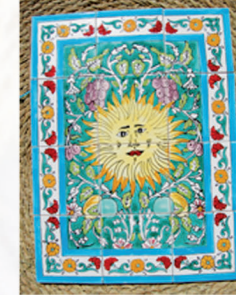
Cod. 56 - 45x30 cm



Cod. 57 - 60x45 cm



Cod. 58 - 60x45 cm



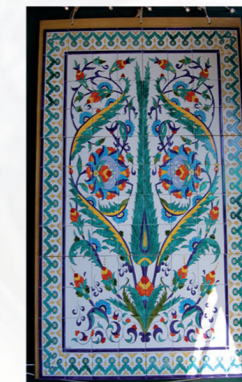
Cod. 59 - 60x45 cm



Cod. 60 - 60x75 cm



Cod. 61 - 60x75 cm



Cod. 62 - 180x120 cm



Cod. 63 - 180x105 cm

# Servizi di Couscous



Cod. 64



Cod. 65



Cod. 66



Cod. 67